

DVI LCD Console Drawer – High Resolution

Optimize rack space. Maximize rack monitoring



(USB Port for device access)

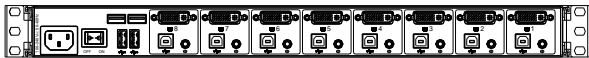


LCD console drawer provides a variety of features that simplify to access servers to making system monitoring, troubleshooting and software upgrades.

The self-locking rails when in the fully extended open position and the ultra convenient auto lock release when the LCD panel is closed, make for simple and hassle free operation.

Available with 17.3" Full HD A-Grade LCD panels, integrated 8 ports USB-DVI & Audio KVM switch.

Support USB HUB 2.0 and touch screen enable function.



Rear of KVM-1708WPD-M2

Features

- Support USB-DVI & Audio interface.
- Support digital DVI and analog VGA input signal
- Front 1x USB, Rear 2x USB 2.0 Type A, Sharing USB peripheral Device for computer (ex, flash disk, hard driver, KB/Mouse).
- Additional two USB console port to add local KB/Mouse.
- Build in 2x 2 watts stereo speakers.
- Durable 104-key keyboard and touch pad.
- Quick and simple installation.
- Self-locking and auto release rails for ultra convenience.
- Port selection via push buttons or hotkey.

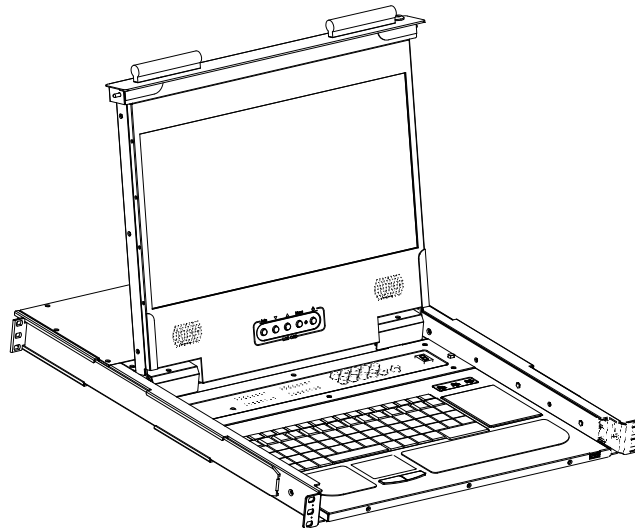
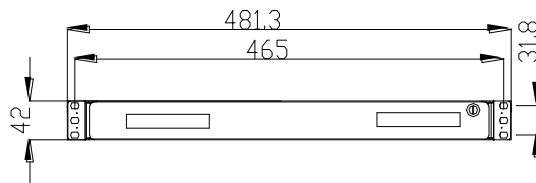
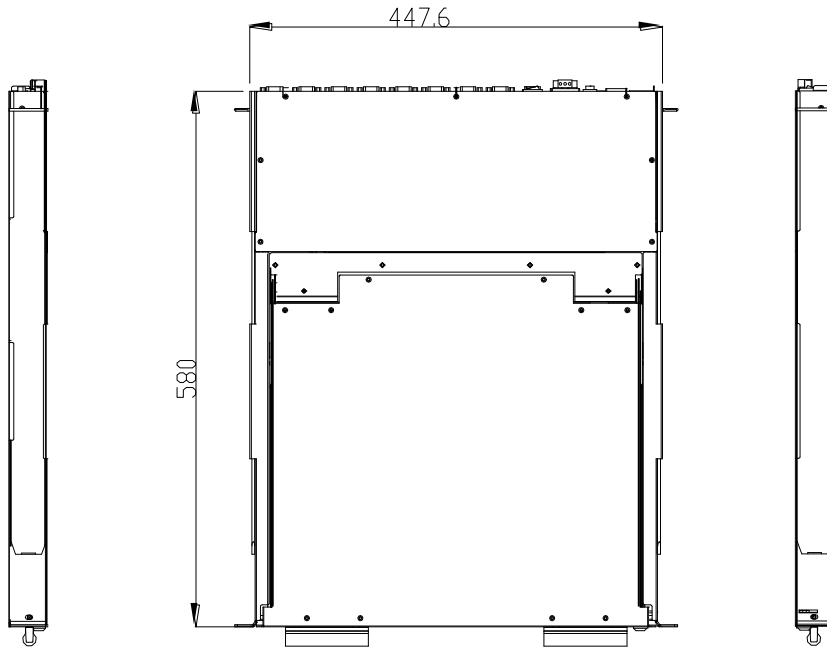
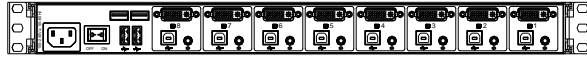
Part No.	KVM-1708WPD-M2		
Direct no. of Computers	8		
Maximum no. of Computers	8		
LCD	Size	17.3"	
	Backlight	LED	
	Resolution	1920*1080 FULL HD (support up to 1920*1200)	
	Max.color	262K	
	Luminance	300cd/m2	
	View Angel (H/V)	140 / 120	
	Contrast Ratio	650 : 1	
Port Selection	Push Button, Hotkey		
USB Local console	Yes , USB x2 for KB/ Mouse		
USB HUB	1x Front , 2xRear USB 2.0 Type A for Peripheral USB Device		
Touch Screen	Yes , for option (Driver needed)		
KB/Mouse Emulation	USB		
Rack Depth	500mm to 1100mm (rack cabinet front rails to rear rails)		
Power	100-240V AC 50/60Hz via IEC Type power cord		
Environment	Operation temp: 0 to 50 °C		
	Storage temp: -20 to 60 °C		
	Humidity: 10% - 90%, non-condensing		
	Shock: 10G acceleration (11ms duration) Vibration: 17 to 500Hz 1G PTP		
Physical Dimensions / Net Weights	448x42x580mm (WxHxD) /12.5KG		
Packing Dimensions / Gross weights	715x140x780mm (WxHxD) / 18.5KG		
Accessory			
1.8meter IEC Type Power Cord			
Option Relate Item			
CD-018	1.8meter DVI-D Cable	CU-018	1.8meter USB Cable
CA-018	1.8meter Audio Cable		

Specifications subject to change without notice

DVI LCD Console Drawer – High Resolution

Optimize rack space. Maximize rack monitoring

Rear of KVM-1708WPD-M2



USA (Head Quarter)
Denichi Computer Devices, Inc.
13200 Pond Springs Rd. #A102, Austin, TX 78729
Office: 512-837-2655
Fax: 512-837-1694
Email: sales@denichi.com

China (Factory)
Add : The south faces industry area of Xia Gang Fu Hai road, Chang'an Town, Dongguan City, Guangdong, China
Email: sales@denichi.com